

EUROPATH NEWS 1/2000



European Society
of
Pathology

Editors

Prof. Niki J. Agnantis
University Department of Pathology
Medical School of Ioannina
GR-45110 Ioannina, Greece
Tel.: +30-651-97524
Fax: +30-651-46209

Prof. Sir Colin Berry
Department of Morbid Anatomy
The Royal London Hospital
London E1 1BB, UK
Tel.: +44-171-3777 349
Fax: +44-171-3770 949

The newsletter of the
European Society of Pathology,
EUROPATH NEWS, is sponsored by
Leica Microsystems Nussloch GmbH

Newsletter of the European Society of Pathology

Dear Colleagues,

We are very pleased to convey to you the first issue of our ESP Newsletter along with our wishes for a **Happy New Year and New Millennium**. This issue begins with the Presidential address from the new President, Prof. Dr. Manuel Sobrinho Simões. A presentation of the Executive Committee for the period 1999–2001 follows.

Consequently, we host the minutes from the General Assembly of the ESP, held during the 17th Congress held in Barcelona, Spain. An obituary for Prof. Nik. Papacharalampous follows. The second announcement of the First Intercontinental Congress of Pathology (Madeira – 30 April–6 May 2000), which is considered to be the first Inter-Congress European Meeting, is included. Furthermore, comments on different scientific events being held in Europe in the course of this year, as well as announcements of forthcoming seminars and other tutorial activities of the ESP are displayed.

Do not hesitate to provide us with material on the activities of your department and even share with us, through *Europath News*, your problems. Last but not least, remember, that we must increase the number of ESP members; this matter is vital for the continuity of our Society. You can easily use the application form for membership, which is included in each issue of the *Europath News* and influence the young staff in your department to join us.

With warmest thanks and regards,
The Editors



Prof. Niki J. Agnantis



Prof. Sir Colin Berry

**Address by the President of the
European Society of Pathology,
Manuel Sobrinho-Simões,
Porto, Portugal**

Dear Members,

I feel honoured and proud to have been elected the 15th President of the ESP at this particular moment. I am not referring to the end of the century, the new millennium, and so on and so forth... but rather to the tough times we are going through with regard to several of the trends on the pathology scene.

Oversimplifying the issue, one may identify among the most striking aspects of the negative developments in our speciality the progressive loss of the traditional prestige of the pathologists, the erosion of the boundaries of the profession, and the frequent absence of a policy able to address the problems created by the exponential generation of biomedical data.

The latter aspect will get worse when high throughput technologies are working at full speed, leading to the appearance of computational biopathologists as the natural substitutes of the fashionable molecular biologists of today.

The discussion of the ways one may envisage to ameliorate the situation lies beyond the scope of this short address, although it seems unquestionable that it is crucial that pathologists refuse to serve as mere pattern recognizers. (As a matter of fact, we are in a rather unique position regarding the integration of all sorts of biomedical data into a meaningful clinical context.)

As many other pathology-oriented institutions, the ESP should contribute to finding the best strategy for circumventing the present difficulties. ESP should also help strengthen European pathology as a whole through, for instance, the reinforcement of European-based pathology

journals. (The impact-factor dictate is, indeed, a major problem that can only be adequately dealt with using a systematic approach.)

If we focus our attention on the ESP, the ultimate goal is obviously to have a strong and active society able to fill in the gap between science and profession.

Briefly, such a goal may be achieved if one is able to consolidate the activities of the ESP and, at the same time, succeed in increasing its membership. The ESP presently has 527 members in good standing, a very low figure in comparison to the more than 12000 practising European pathologists.

We are therefore facing a challenge, which is a sort of "virtuous" circle. Provided we are able to improve the amount, diversity and quality of the activities of the ESP, we will probably overcome our biggest problem, the low membership.

Most of the measures to achieve the former objective have been implemented in the last decade and were continuously pursued by the successive Presidents and Boards of the Society. Such measures may be summarized as follows:

- Increasing the links with the National Societies of Pathology through deep structural and functional changes in the Advisory Council of ESP
- Organizing every 2 years scientifically sound and socially entertaining international congresses, paying particular attention to the balance of research and professionally oriented topics

- Keeping the original model of the European School of Pathology (EScoP) in Turin and creating another branch of the School in Warsaw
- Keeping the excellent level of the annual Symposia of the European Course on Cellular Pathology (EUROCELLPATH)
- Reinforcing the graduate activities organized under the umbrella of the European Institute for Continuing Medical Education in Pathology
- Establishing a firm relationship with *Virchows Archiv*, the journal newly affiliated with the ESP (details on the joint-venture ESP-*Virchows Archiv* can be read in this issue of EUROPATH NEWS)
- Establishing a structured collaboration with the European Board of Pathology

At the Barcelona meetings of the Executive Committee, apart from recognizing the need to review the Statutes and the By-laws of the ESP, we reached the following decisions:

- To reinforce the existing working groups of ESP and to stimulate the creation of new ones, turning them into the "functional units" of the Society.
- To reintroduce the concept of intercongress meetings which mainly focus on the activities of the working groups (the first such meeting will take place in Madeira in the first week of May 2000 and the next one is scheduled for a Piemonte lake, near Turin, in May 2002).

- To create the WEB site of the ESP (Telepathology, Working Groups, European Institute for Continuing Medical Education).
- To increase the circulation of residents and young pathologists through the establishment of an exchange programme involving many European labs on a voluntary basis.
- To reinforce the links with the International Academy of Pathology and the Latin American Society of Pathology.

We also decided, having the residents and young pathologists as our main concern, to try to expand the graduate activities of the ESP (EScoP, EUROCELLPATH, Advanced Courses) and to keep the cost of such activities, as well as the congress and intercongress fees, at the lowest possible level.

The European Society of Pathology has always been a society of friends with an extremely nice atmosphere. The challenge is to turn it into a bigger and better structured institution without losing the aforementioned qualities. With your help, dear members, I am sure we will do it.



Prof. Dr. Manuel Sobrinho-Simões
President of ESP

Presentation of the Executive Committee of the European Society of Pathology 1999–2001

President



Prof. M. Sobrinho-Simões, Portugal

Past President



Prof. G. Klöppel, Germany

President Elect



Prof. G. Bussolati, Italy



Treasurer



Prof. U. van Haelst, The Netherlands



Secretary General

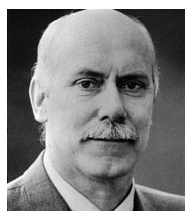


Prof. J.M. Nesland, Norway

Members



Prof. P. Bedossa, France



Prof. M. Dietel, Germany



Prof. E. Sivridis, Greece



Prof. M. Marichal, Belgium



Prof. F.T. Bosmann, Switzerland



Prof. R.H.W. Simpson, UK



Prof. J. Stachura, Poland



Prof. S. Uccini, Italy

Minutes of the General Assembly of the European Society of Pathology, during the 17th Congress, Tuesday, 21 September 1999, 1200–1330 hours, at the Congress Center in Barcelona, Spain

Chairman: G. Klöppel,
President of ESP

Secretary: J.M. Nesland,
Secretary of ESP

Members present: About 95 members
of the Society were
present.

Item 1: Welcome

G. Klöppel, President of ESP, welcomed the members and expressed his appreciation for their attendance.

Item 2: Approval of the agenda

The agenda was approved with some alterations proposed by the chairman.

Item 3: Approval of the minutes of the last general assembly in Maastricht, 3 September 1997

The minutes were published in *Virchows Archiv* and also approved in a previous meeting of the Executive Committee. The minutes were approved by the General Assembly.

Item 4: Report of the president

The President congratulated Professor Cardesa and his crew for the very successful congress in Barcelona. More than 1600 attendants have registered and about 800 papers will be/ or have been delivered. R. Heimann, the past-president, was thanked for his achievements. The cooperation with the members of the executive committee, the secretary, the treasurer and the chairman of the advisory council was appreciated. Special thanks went to G. Delides, G. Mikuz and A. Cardesa, who finished their terms as members of the executive committee. Professor G. Klöppel, the president, mentioned the 1993 pro-

gramme for East/West cooperation and the fellowships for young pathologists to work in laboratories in Western European countries. The branch of the European School of Pathology in Warsaw was mentioned. This branch replicates courses given in the European School of Pathology in Torino. The Society will pursue the opening of other branches in Eastern European countries. Special thanks went to Professor G. Bussolati and Professor M. Papotti for their major efforts with the EScoP.

The president mentioned the affiliation with *Virchows Archiv* as the new journal of the society. For members of the society, a subscription to the journal is compulsory.

The reactivation of the advisory council under the chairmanship of Professor A. Llombart-Bosch was stressed. The advisory council is the link between the ESP and the national societies and is composed of secretaries and/or presidents of all national societies in Europe. Information can be passed on easily in this way. The advisory council is also involved in composing the scientific programme of the congress. The next congress will take place in Berlin in the year 2001. Chairman of the organizing committee is Professor Manfred Dietel, Head of the University Hospital, Dept. of Pathology, Berlin, Germany.

European courses in cellular pathology (EuroCellPath) were mentioned. The major efforts of Professor Jean Alexis Grimaud, who founded and has chaired EuroCellPath since 1991, was warmly appreciated. Many of the lectures given in the courses have been published in *Pathology Update*, and also in *Current Concepts in Pathology*. The course for year 2000 will take place in Lillehammer, Norway, in the period 21–25 June. The Secretary, Professor Jahn M. Nesland, is the host.

G. Klöppel mentioned the impact of the working groups. The members of the working groups must be mem-

bers of the European Society of Pathology and the chairmen of the working groups report the activities to the Secretary of ESP.

The executive committee has been working to establish a new connection with IAP. The discussions have led to agreement with the officers of IAP that ESP should be allowed to organize a session in the IAP congress in Amsterdam in the year 2002. IAP will be offered the same opportunity to organize a session during the next ESP congress in Berlin in 2001.

The president mentioned the very good cooperation with Springer Verlag. They also print and distribute the Newsletter, which is edited by Professor Niki Agnantis and Professor Sir Colin Berry. The Newsletter appears four times per year and the major efforts by the editors are greatly appreciated. Special thanks also to DAKO and the other companies for their support. DAKO is the main sponsor of the Barcelona congress and is also sponsoring the EScoP.

Item 5: Professor U. van Haelst, the treasurer, regarding the membership situation

As of March 1999 the ESP had 1501 listed members, but only 53% in good standing. A total of 705 members had not paid the fee. Information about the affiliation with *Virchows Archiv*, together with a free copy of the journal was mailed to all members (1501). A response was received from 656 members. Reminders were distributed in May 1999.

ESP has now 527 members in good standing, a decrease from 796 since before the introduction of the affiliation with *Virchows Archiv*. The number of membership countries has decreased from 62 to 50. The society has 12 honorary members (including Professor Karl Lennert). The treasurer also honoured deceased members (5) during the last 2-year period. Since March 1999 ESP has received 47 cancellations. Professor van Haelst gave a detailed report on the financial situation of ESP. Total assets increased from NLG 439.749 to NLG

511.540 (August 1999). Total income of membership fees was NLG 134.173 (NLG 112.176 in 1995–1997). Total income for the period from August 1997 to August 1999 was NLG 211.890, including membership fees, bank interest, reimbursement of the congress loan Maastricht 1997 (NLG 11.692), and profit of the congress and registration EScoP courses (NLG 3000). Total expenditure in the 2-year period was NLG 140.099. The expenditure includes loan for the Barcelona congress (NLG 20.000); loan for the First Intercontinental Congress Madeira 2000 (NLG 10.000) that is expected to be repaid in the next period; and sponsoring (NLG 50.109). The President, G. Klöppel, thanked Professor van Haelst and his wife, Christine, for the superb job they have done for the Society over the years.

Item 6: Report from the chairman of the advisory council

Professor A. Llombart-Bosch (chairman of the advisory council) informed us that the advisory council had two meetings in the period since the Maastricht congress in 1997. A total of 16 representatives from the national societies were present in the meeting in Barcelona in February 1999 and 17 were present at the last meeting in Barcelona, 18 September 1999. The advisory council was actively involved in the scientific programme for the Barcelona congress and had proposals for speakers. In the second meeting the activity was high, with discussions about the link between the ESP and the national societies. The transfer of information between the ESP and the national societies is crucial. Information from the national societies can also be distributed through EuroPath News. The advisory council had discussed the affiliation with *Virchows Archiv* and the majority of the representatives supported this affiliation. The problem with funding of research was discussed and the need for publishing in high impact factor journals. The importance of supporting *Virchows Archiv*, our own society

journal, was approved. The major topic of discussion was how to increase the number of memberships and the responsibility all the members of the advisory council had in this respect.

After finishing the report, Professor A. Llombart-Bosch was warmly thanked by the President.

Item 7: Election of new members of the executive committee

The President, Professor G. Klöppel, received unanimous approval of all new proposed members.

The new and re-elected members are:

President elect: Gianni Bussolati
Treasurer: Urbain van Haelst (re-election)

Members of the executive committee: Pierre Bedossa (previously substituted DelSol for 2 years, now elected for a full 4-year period)
Fred Bosman, Lausanne, Switzerland
Manfred Dietel, Berlin, Germany
Efthimios Sivridis, Alexandroupolis, Greece

The previous past-president R. Heilmann and members of the executive committee G. Delides, G. Mikuz and A. Cardesa were all thanked for their participation in the activities of ESP.

Item 8: Honorary memberships

Professor Karl Lennert, Kiel, already received the award for his achievement for European pathology during the opening ceremony. It was unanimously approved.

Item 9: Address of the new president

Professor M. Sobrinho-Simões expressed his thanks for the support as 15th president of the ESP. He also expressed his gratitude to Professor G. Klöppel for the cooperation and

congratulated him and the executive committee for the ESP achievements during the past 2 years. The major efforts of Professor A. Cardesa and his team as well as the Spanish and Catalan Societies of Pathology were appreciated.

The newly elected president focused upon the need for pathology to expand the interface with many other disciplines. He pointed out that there is a need to cope with new times and new developments in pathology and outlined how the ESP could play a role in this context. He expressed the opinion that the ESP has always been a society of friends. This should be combined with increased efficiency, increased memberships, more young pathologists, closer contact with national societies and the ESP giving more support to members with regard to day-to-day pathology problems. The president intends to improve the impact of the advisory council and work to constantly improve the quality of *Virchows Archiv* and EuroPath News. He also mentioned the importance of congresses, EScoP activities and EuroCellPath conferences. A promise was made to strengthen intercongress activities. The President advised the group that ESP will have intercongress meetings based upon activities of the working groups. The first such intercongress activity will be the congress in Madeira, in the year 2000. The next one will take place in Torino in 2002 chaired by G. Bussolati and co-workers. The President also mentioned that the ESP will soon have an internet-site with links to the various working groups.

Working groups are important for the activity of the society and the president challenged all to be involved in the established working groups or to form new ones. He also stressed the need to rewrite the By-laws of the ESP and will, together with Professor A. Llombart-Bosch, see that a revision is prepared.

The newly elected president, Professor M. Sobrinho-Simões, also said that in the coming period the society will work hard to create conditions for young pathologists to visit labo-

ratories outside their own countries. With all these expectations, the president promised to work hard for the society.

Item 10: Report on the Madeira Congress

The President of the Madeira Congress, R. Heimann, informed us about the First Intercontinental Congress of Pathology in Madeira, 30 April–6 May 2000. Plenary sessions, state-of-the-art lectures, and a poster exhibition will be held along with a very stimulating social programme. After presentation of some appealing slides from the Madeira island, he invited everyone to the congress.

Item 11: The year 2003 – European Congress of Pathology

Professor G. Klöppel announced that Ljubljana, Slovenia, has been selected as the site for the year 2003. D. Ferluga, Ljubljana, presented the city and expressed his gratitude for the honour of hosting the congress and reminded the general assembly also about the cancellation of a fully prepared congress in 1991. The choice of Ljubljana was unanimously approved by the general assembly.

Item 12: Any other business: ESP congress of Berlin 2001

Professor M. Dietel welcomed all to Berlin in the period 9–14 September 2001 and gave a brief introduction as to what could be expected of both scientific and social activities.

Item 13: The president closed the General Assembly at 1.30 p.m.

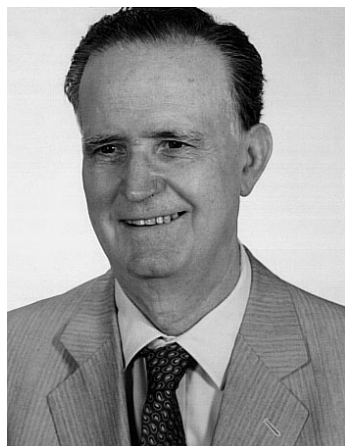
Professor Günter Klöppel
President

Professor Jahn M. Nesland
Secretary

Obituary

Professor

Nik. X. Papacharalampous



Professor Nik. X. Papacharalampous graduated from Athens University with an M.D. in 1941 and a Ph.D. in experimental pathology in 1952. Before becoming an emeritus professor, he held the position of director of the Department of Pathology of the Red Cross Hospital in Athens from 1952 to 1971, and from 1971 to 1986 he was a full professor of pathology at

Athens University Medical School. He has served as the president of the 10th European Congress of Pathology, which was held in Athens and was very successful. He was an active member of ten Greek and European medical societies. He published 150 articles in English and German medical journals and 255 in Greek journals, along with 200 citations. He received honorary diplomas and medals from the European Society of Pathology, the Hellenic Society of Pathology, the Red Cross Hospital, Athens University and Ioannina University. He worked extensively with rats, focusing on arteriosclerosis and neoplasms.

Nik. X. Papacharalampous was born in Attiki, Greece, on 21 November 1918 and died on 29 October 1999. He was the son of the late Xenophon and Maria Papacharalampous. He was married to Anne N. Trimmis Papacharalampous, with whom he has two sons, Xenophon (Assistant Professor of Radiology) and Dimitrios (Architect of international renown).

Prof. N.J. Agnantis

1st Intercontinental Congress of Pathology, Island of Madeira (Portugal), 30 April–5 May 2000

Scientific Programme

Only Plenary Sessions

Special Sessions and Symposia

Paper chase and quiz on Madeira and pathology (Chr. Nezelof, R. Heimann and E. Lopez-Corella)
How to improve the image of the pathologist? (J.V. Johannessen et al.)
Searching for micrometastases (H. Battifora et al.)
Telepathology (J.M. Nesland et al.)
Latin America vs Europe Slide Contest (Juri: J. Rosai, J. Arias Stella and R. Heimann; Captains of the teams: R. Drut and V. Eusebi)
Closing ceremony: political correctness in Pathology. A much needed new approach from an ethical view point (R. Heimann)

Keynote lectures

The future of anatomical pathology (C.D.M. Fletcher)
Pre-natal brain damage, cortical re-organisation, and epilepsy (M. Marin Padilla), Cancer and the molecular mirage (J. Rosai) Get REAL!
WHO's next? Lymphoma classification is a model for consensus in pathology (N.L. Harris)
Fifty years of amoebiasis (R. Perez Tamayo)
Making babies: past and present (F. Gonzalez Crussi)

State-of-the-art lectures:

"How do I look at..."

Endometrial biopsy (J. Arias Stella)
Skin biopsy (D. Santa Cruz)
Endomyocardial biopsy (A.E. Becker)
Muscle biopsy (A.L. Taratuto)
Lymph node biopsy (N.L. Harris)
Bone marrow biopsy (A. Rosas Uribe)
Liver biopsy (V.J. Desmet)
Gastric biopsy (P. Correa)

Slide seminars

Cytopathology (F. Schmitt et al.)
Soft tissue tumours (A. Nascimento et al.)
Breast tumours (V. Eusebi et al.)

Infectious pathology (M. Franco et al.)
Surgical pathology (M.L. Carcangiu and J. Rosai)

Poster exhibition and poster rounds

Companion meetings

There will be symposia or recent advances sessions on cytopathology, gastrointestinal pathology, paediatric pathology, breast pathology, urogenital pathology, haematopathology, endocrine pathology and head and neck pathology, organised by national societies of pathology and working groups of ESP and SLAP.

How to reach Madeira

There are flights from almost all European capitals and big cities, as well as from many US and Brazilian cities, to Funchal (Madeira) usually via Lisbon or Oporto. In April/May there are also many charter flights, mainly from England, Germany and Scandinavia. The cost of the commercial tickets range from 200 to 450 EUROS (Europe) and from 600 to 1000 EUROS (US and Brazil) but there are more inexpensive fares in package deals and/or charter flights.

Social programme

April 30	Welcome reception with folk dances (Congress Centre)
May 1	Dinner at the sea front
May 2	Dinner in the old Funchal
May 3	Free day with tour along the island (lunch included)
May 4	Sunset party
May 5	Closing dinner at the Governor's palace
May 6	Madeira wine farewell (Congress Centre)

Registration fees (prices in EUROS, covering all the events of the social programme)

	Before 31 January 2000	After 31 January 2000	On site
ESP and SLAP members	330	400	550
Non members	400	470	620
Residents and Pathologists <35 years	165	250	400
Accompanying persons	165	200	350

Hotel (prices in EUROS per day including breakfast)

	Single	Double	Distance from the Congress Centre
Reid's (Luxury)	175	240	Walking distance (10 m)
Cliff Bay (Luxury)	120	155	Walking distance (10 m)
Casino Park (*****)	80	95	Congress Centre
Carlton (*****)	80	95	Walking distance (5 m)
Savoy (*****)	80	90	Walking distance (5 m)
Windsor (****)	55	60	Downtown
Santa Isabel (***)	35	42	Walking distance (10 m)
Youth Hostel	17	26	Outskirts

For inclusion in the mailing list and further information please contact:

Dr. Henriques de Gouveia,
Bravatour Viagens e Turismo, Lda,
Rua Carreira nº 52 B,
9000 Funchal-Madeira, Portugal
(Fax: 00-351-91/235726).

Deadline for sending the poster abstracts: 1 December 1999.

For detailed information on the scientific programme and to obtain registration forms use the internet site of the congress

(www.ipatimup.pt/events/maderia2000) or contact any of the IPATIMUP members of the Organising Committee: Fátima Carneiro, Fernando Schmitt or Manuel Sobrinho Simões (e-mail: madeira2000@ipatimup.pt).

Address:

R. Roberto Frias s/n,
4200 Porto, Portugal
(Fax: +351-2-5570799)

Quiz on Madeira and Pathology

C. Nezelof, R. Heimann and J. Goldberg

Before starting the real thing look at the pictures and see if you recognize two regular customers of the REID's HOTEL in MADEIRA.



Here's the quiz: Please see if you know the answers to the following questions.

1. Who is the pathologist who died and was buried in Funchal?
2. Quote three pathologists who received the Nobel Prize.
3. Quote two diseases carrying the name of an island where they were identified.
4. The name of a Chinese province was given to a deficiency. Give the name of the province and of the disease.
5. Which infantile disease carries in the international literature the original and exotic name given to her by a Ghanean tribe?
6. Which animal is able to switch sex without modifying its behaviour?
7. Quote the organ which does not exist in the human species but which has given a tremendous impetus to Immunology.
8. Quote the name of two botanists who were instrumental in the knowledge and understanding of certain human diseases.
9. It is generally acknowledged that the best vascularized organs are the best receptors for metastases. However, there are two striking exceptions. Which are these?
10. He was born on a distant island in the Indian Ocean of an American father and a French mother. He crossed the Atlantic more than twenty times on sail boats and was a very well known neuropathologist. Who was this?
11. Pathologists have often been seduced by politics. Could you quote a German, an English, a French and a Peruvian pathologist who attempted to make a political career?
12. A very old staining method helped to discover a disease. What is the staining method and what is the disease?

Send your answers to: madeira2000@ipatimup.pt

Ioannina University Courses in Pathology (IUCP)
Salivary Glands Pathology-Oncology, Ioannina, 18–20 May 2000
(Preliminary Programme First Draft)

Thursday, 18 May 2000

17.00–18.00	Registrations (Dept. of Pathology)
18.00–18.30	Welcome Addresses
18.30–19.00	Opening Lecture: The role of preoperative biopsy in diagnosis and classification of salivary gland tumours: a challenge for cooperation with the clinician, Prof. A. Cardesa (E)
19.00–19.30	Epidemiology of salivary gland tumours, Assoc. Prof. J. Ioannidis (GR)
19.30–20.00	Imaging techniques, Dr. M. Petropoulou (GR)
20.00–20.30	Histology of the normal salivary glands, Assoc. Prof. P. Kanavaros (GR)
20.30–21.00	Discussion
22.00	♦ Get together cocktail

Friday, 19 May 2000

09.00–10.00	Slide seminar A: Lymphoid proliferations, Assoc. Prof. P. Kanavaros (GR), Ass. Prof. M. Bai (GR)
10.00–10.30	♦ Coffee Break
10.30–11.30	Discussion of slide seminar A, Assoc. Prof. P. Kanavaros (GR), Ass. Prof. M. Bai (GR)
11.30–12.15	Non neoplastic, inflammatory and tumour-like lesions, Prof. P. Slootweg (NL)
12.15–13.00	Benign and malignant lymphoid proliferations, Prof. R.H.W. Simpson (UK)
13.00–13.30	Histogenesis and classification of salivary gland tumours, Prof. A. Cardesa (E)
13.30–14.00	Discussion
14.00–15.30	♦ Lunch
15.30–16.30	Slide seminar B: Pitfalls in salivary gland pathology, Prof. R.H.W. Simpson (UK), Prof. H.B. Hellquist (N), Prof. P. Slootweg (NL), Prof. A. Cardesa (E)
16.30–17.00	♦ Coffee Break
17.00–18.00	Molecular biology and immunohistochemistry, Prof. H.B. Hellquist (N)
18.00–18.45	Pleomorphic adenoma, myoepithelioma and the development of malignancy in these tumours, Prof. P. Slootweg (NL)
18.45–19.00	Discussion
21.30	♦ Dinner

Saturday, 20 May 2000

09.00–09.30	Other adenomas –basal cell adenomas, Warthin, oncocytic lesions, Prof. R.H.W. Simpson (UK)
09.30–10.00	Acinic cell carcinoma, Prof. H.B. Hellquist (N)
10.00–10.15	Discussion
10.15–10.45	♦ Coffee Break
10.45–11.15	Mucoepidermoid carcinoma, Prof. H.B. Hellquist (N)
11.15–11.45	Adenoid cystic carcinoma and PLGA, Prof. P. Slootweg (NL)
11.45–12.15	Epithelial-myoepithelial and clear cell carcinomas, Prof. R.H.W. Simpson (UK)
12.15–13.00	Other carcinomas, Prof. H.B. Hellquist (N)
13.00–13.30	Discussion
13.30–15.30	♦ Lunch
15.30–16.30	Discussion of slide seminar B, Prof. R.H.W. Simpson (U.K.), Prof. H.B. Hellquist (N), Prof. P. Slootweg (NL), Prof. A. Cardesa (E)
16.30–17.00	♦ Coffee Break
17.00–17.45	Surgical management, Dr. C. Vlastou (GR)
17.45–18.15	Therapeutic approaches, Dr. Chr. Tolis (GR)
18.15–18.30	Discussion
18.30–19.00	Examination in salivary glands pathology
19.00–19.30	Discussion and general conclusions
	END OF THE COURSE
21.30	♦ Farewell Dinner

Director-Coordinator:
Prof. Niki J. Agnantis

Registration fees:

EURO: 400 (200 for residents) Accommodation and full-board are included
 Account number in EURO: 359/61930-96,
 National Bank of Greece, Ioannina, Greece.

Correspondence:

Prof. Niki J. Agnantis, M.D.,
 Institute of Pathology, University of Ioannina,
 Medical School, University Campus,
 45110 Ioannina, Greece
 Tel. +30651-97520, Fax: +30651-46209

Ioannina University Courses in Pathology (IUCP)
Thyroid Pathology-Oncology, Ioannina, 22–24 May 2000
(Preliminary Programme First Draft)

Monday, 22 May 2000

09.30–10.30	Registration
10.30–12.00	Slide seminar A: Problematic thyroid cases, Assoc. Prof. C. Scopa (GR)
12.00–12.30	♦ Coffee Break
12.30–14.00	Slide seminar B: Problematic thyroid cases, Dr. P. Viacava (I), Dr. A.G. Naccarato (I)
14.00–15.00	♦ Lunch
18.00–18.30	Opening ceremony: Welcome Addresses
18.30–19.00	Opening lecture: Nodular and diffuse palpable thyroid lesions: a challenge for cooperation with the pathologist, Assoc. Prof. Ag. Tsatsoulis (GR)
19.00–19.30	Histology-function of the normal thyroid gland, Assoc. Prof. P. Kanavaros (GR)
19.30–20.00	Epidemiology of thyroid diseases and carcinomas, Assoc. Prof. A. Linou (GR)
20.00–20.45	Imaging techniques (US*,ST**), *Assoc. Prof. C. Tsampoulas (GR), **Lecturer A. Fotopoulos (GR)
21.30	Award prizes to the best medical students in pathology
22.00	♦ Get together cocktail

Tuesday, 23 May 2000

09.00–09.30	Autoimmune thyroid disease, Assoc. Prof. Sof. Tseleni (GR)
09.30–10.15	Nodular goitre and adenomas, Prof. M. Sobrinho Simões (P)
10.15–10.30	Discussion
10.30–11.00	♦ Coffee Break
11.00–12.00	Discussion of slide seminar A, Assoc. Prof. C. Scopa (GR)
12.00–12.30	Thyroid neoplasia: general classification, Assoc. Prof. C. Scopa (GR)
12.30–13.00	Papillary thyroid carcinoma, Ass. Prof. Hel. Karvouni (GR)
13.00–13.15	Discussion
13.15–14.15	Discussion of slide seminar B, Prof. Gen. Bevilacqua (I)
14.15–15.45	♦ Lunch
15.45–16.15	Follicular tumours, Prof. J.M. Cameselle-Teijeiro (E)
16.15–16.45	Hürthle cell tumours, Prof. X. Matias-Guiu (E)
16.45–17.00	Discussion
17.00–17.30	♦ Coffee Break

17.30–18.00	Poorly differentiated and undifferentiated carcinomas, Prof. J.M. Cameselle-Teijeiro (E)
18.00–18.45	Medullary carcinoma, Prof. X. Matias-Guiu (E)
18.45–19.00	Discussion
21.30	♦ Dinner

Wednesday, 24 May 2000

9.00–10.30	Slide seminar C: FNA of thyroid lesions, Prof. Hel. Deligeorgis (GR)
10.30–11.00	♦ Coffee Break
11.00–11.30	Prognostic factors of differentiated carcinomas, Prof. M. Sobrinho Simões (P)
11.30–11.45	Discussion
11.45–12.15	Genetic markers in thyroid cancer, Assoc. Prof. M. Alevizaki (GR)
12.15–12.30	Discussion
12.30–13.15	Surgical management of thyroid tumours, Assoc. Prof. D. Linos (GR)
13.15–14.00	Therapeutic approaches of thyroid tumours, Assoc. Prof. Ag. Tsatsoulis (GR), Lecturer A. Fotopoulos (GR)
14.00–14.15	Discussion
14.15–16.00	♦ Lunch
16.00–16.30	FNA of thyroid lesions, Prof. Hel. Deligeorgis (GR)
16.30–16.45	Discussion
16.45–17.45	Discussion of slide seminar C, Prof. Hel. Deligeorgis (GR)
17.45–18.15	♦ Coffee Break
18.15–19.00	Pitfalls in thyroid pathology, Assoc. Prof. Sof. Tseleni (GR)
19.00–19.30	Examination in thyroid pathology
19.30–20.00	Discussion and general conclusions
	END OF THE COURSE
21.30	♦ Farewell Dinner

Director-Coordinator:
Prof. Niki J. Agnantis

Registration fees:

EURO: 400 (200 for residents) Accommodation and full-board are included

Account number in EURO: 359/61930-96,
 National Bank of Greece, Ioannina, Greece.

Correspondence:

Prof. Niki J. Agnantis, M.D.,
 Institute of Pathology, University of Ioannina,
 Medical School, University Campus,
 45110 Ioannina, Greece
 Tel. +30651-97520, Fax: +30651-46209



EUROCELLPATH'2000

MOLECULAR MECHANISMS IN DEVELOPMENT AND TREATMENT OF CANCER

21 – 25 June 2000

The Montebello Centre, Lillehammer, Norway



PROGRAMME:

JUNE 21, WEDNESDAY:

17.00-18.00: Registration
18.00-18.15: Welcome
18.15-18.45: Cancer cell immortality. **F. Bosman, Lausanne**
18.45-19.15: Telomerase in cancer treatment. **P. Bedossa, Paris**
20.00 - Dinner

JUNE 22, THURSDAY:

Cancer development and progression:

08.30-09.15: Molecular biology of tumor progression. **J. Costa, Yale University**
09.15-10.00: Tumor cell adhesion. **Ulla Wewer, Copenhagen**
10.00-10.30: Break
10.30-11.15: E-Cadherin and catenins in development and treatment of cancer. **M. Mareel, Gent**
11.15-12.00: Molecular genetics of non-invasive versus invasive neoplasms in the pancreas. **G. Klöppel, J. Lüttke, S. Domm, Kiel**
12.00-12.45: Histogenesis of Hodgkins lymphoma. **Jan Delabie, Oslo**
12.45-14.30: Lunch

New tools in pathology:

14.30-15.00: Microarray systems. **G. Walter, Berlin**
15.00-15.30: Ultrasound microscopy. **J.A. Grimaud, Paris**
15.30-16.00: Laser scan cytometry. **R. Kunz, Oslo**
16.00-16.30: Break
16.30-17.15: Proteomics in breast tumors. **G. Auer, Stockholm**
17.50-18.30: Free presentations
20.00 - Dinner

JUNE 23, FRIDAY:

Stromal interaction in cancer progression:

09.00-09.45: What is mesoderm and what is its role in tumors? **I.Damjanov, Kansas City**
09.45-10.30: MMT's and TIMP's in cancer progression. **R. Reich, Jerusalem**
10.30-11.00: Break
11.00-11.45: Mechanisms of myofibroblast differentiation and action. **G. Gabbiani, Geneva**
11.45-12.45: Free presentations
12.45-14.30: Lunch
14.30-18.00: Sightseeing
18.00-19.00: Dinner
19.00-24.00: Midsummer evening festival, Maihaugen, Lillehammer

JUNE 24, SATURDAY:

Cancer therapy:

10.00-10.45: Tumor immunology and immune therapy. **J. Zeuthen, Copenhagen**
10.45-11.15: K-ras mutations and immunotherapy of colorectal carcinomas. **G. Gaudernack, Oslo**
11.15-11.45: Break
11.45-12.30: Gene therapy
12.30-14.30: Lunch
14.30-15.15: Photodynamic therapy. **Q.Peng, Oslo**
15.15-15.45: PDT of oesophagus carcinoma. **K.E. Giercksky, Oslo**
15.45-16.15: Break
Drug resistance:
16.15-17.15: Mechanisms in drug resistance (teleconference). **M. Dietel, Berlin**
17.15-18.00: Drug resistance in breast cancer treatment. **A-L. Børresen-Dale, Oslo**
20.00 - Conference dinner

JUNE 25, SUNDAY:

Evaluation of treatment response:

09.00-09.45: Is apoptosis useful for evaluation of cancer treatment? **N. Agnantis, Ioannina**
09.45-10.30: Monitoring treatment response. **G. Kvalheim, Oslo**
10.30-11.00: Break
11.00-11.30: The role of the surgical pathologist in evaluation of treatment response. **F. Carneiro, Porto**
11.30-11.45: Closing remarks

Scientific Committee:

Jahn M. Nesland, Pierre Bedossa, Jean Alexis Grimaud, Fatima Carneiro.

Local organizing committee:

Jahn M. Nesland, Wencke Danielsen, Elisabeth Emilsen, Raisa Gurvitsj.

On behalf of the scientific and organizing committee, I have the pleasure to welcome you to Norway in the region of Lillehammer, well known from the winter olympics.

We can offer you an appealing scientific programme, and a friendly atmosphere. The number of participants is limited to 100. The registration fee covers the syllabus, conference dinner, sightseeing, transportation from/to airport (busses available). Participants are invited to submit abstracts for free presentations.

Please ask for the application form* and register as soon as possible. More practical details will be provided after registration.

We look forward to seeing you in Norway.

Jahn M. Nesland*
Dept. of Pathology
The Norwegian Radium Hospital
Montebello, N-0310 Oslo, Norway
Tel: +47 22935620
Fax: +47 22730164
e-mail: J.M.Nesland@labmed.uio.no

Important message to all ESP members who want to send material for publication in the *Europath News*, which will appear four times a year (February, May, August, November) incorporated in *Virchows Archiv*: the material should be sent to one of the editors 2 months ahead of time by e-mail:

C.L. Berry@mds.qmw.ac.uk or nagnanti@cc.uoi.gr

Slide seminar in the Internet

Diagnostic histopathology cases presented at the European School of Pathology courses in Turin are going to be shown via Internet.

You are kindly invited to visit the site at <http://www.isi.it/pathology/index.htm>.

Postgraduate courses in theoretical and diagnostic histopathology – PCTDH – (Part III)

6–10 September 2000,

Venue: “St. Ioannis Theologos”

Monastery Congress Center,

Aetochori, Alexandroupolis, Greece

Topics:

Lymphomas, Kidneys, Lungs, Skin, Autopsy and Placenta

Preliminary list of Faculty:

C. Berry (U.K.),

J. Underwood (U.K.),

M. Wells (U.K.), C. Baroni (I),

J. Vasiljevic (J), M. Sheaff (U.K.),

N.J. Agnantis (GR),

Th. Sivridis (GR), D. Stefanou (GR),

M. Bai (GR) and A. Giatromanolaki

(GR)

Directors and Coordinators:

Assoc. Prof. Themis Sivridis (GR)

and Prof. Niki J. Agnantis (GR)

Correspondence:

Assoc. Prof. Themis Sivridis,

MD, Ph.D,

Director of the Department

of Pathology,

Democritus University of Thrace,

Medical School, P.O. BOX 128,

Alexandroupolis, 68100 Greece

(Tel. and Fax: +0030551-37833)

ULTRAPATH X

The ultimate conference on diagnostic electron microscopy and immunohistochemistry. The Society for Ultrastructural Pathology will hold its biennial meeting in the historic and enchanting city of Florence, Italy, on 2–7 July 2000. The scientific program will emphasize the applications of electron microscopy, immunohistochemistry, and molecular methods in diagnostic pathology. As in years past, a variety of topics will be covered, and the Program Committee invites you to submit abstracts to be considered for platform or poster presentations. The meeting will be held in the four star Grand Hotel Baglioni in the historic center of Florence, only minutes away from major art galleries featuring one of the largest collection of art in the world.

Those wishing to contribute to the scientific program are urged to contact Dr. J. Allan Tucker (Program Committee Chair, JTucker@USAMAIL.USOUTHAL.EDU) or Prof. Marco Santucci (Local Organizing Committee Chair, Marco.Santucci@UNIFI.IT). No special form is required for submission of abstracts. You can use A4 paper and the length of your contribution should not exceed 4–5 typewritten pages. Please send Dr. J. Allan Tucker the abstract(s) (both in paper format and as a file in Word for Windows DOC or RTF format) at your earliest convenience. The deadline for submission of abstracts is the end of April 2000. The CSS Agency, Via G. Mazzini 70, 50132 Firenze, Tel. +39 055 2480202, Fax +39 055 2480246 (person to contact Ms. Susanna Casprini, CSS@CSS-CONGRESSI.IT) will take care of the Hotel reservation and meeting registration. The registration fee (covering all the scientific and social events, coffee breaks and 3 luncheons) is 590 EUROS.

For further information concerning the Society for Ultrastructural Pathology or UltraPath X, please feel free to contact Prof. Santucci or Dr. Tucker, or see <http://sup.ultra-kohl.com/> or <http://sup.ultrakohl.com/ultrapath10/ultrpt10.htm>.

Society for Ultrastructural Pathology

ULTRAPATH X

The ultimate conference on diagnostic electron microscopy and immunohistochemistry



Preliminary Scientific Program (Only plenary sessions)

General Topics I	(Chairs: Baccio Baccetti and Katherine Chorneyko)
General Topics II	(Chairs: Ted F. Beals and Jahn M. Nesland)
Case Presentations I	(Chairs: Brian Eyden and J. Allan Tucker)
Case Presentations II	(Chairs: Ginette Lajoie-Starkell and Marco Santucci)
Soft Tissue and Bone	(Chairs: Ermanno Bonucci and Robert A. Erlandson)
Thoracic Pathology	(Chairs: Samuel P. Hammar, Douglas W. Henderson, and Victor L. Roggli)
Urinary Tract Pathology	(Chairs: Guillermo A. Herrera and Guido Monga)
Neuropathology	(Chairs: Lauren A. Langford and Bernd W. Scheithauer)
Pediatric Pathology	(Chairs: John Hicks and Gary W. Mierau)
Endocrine System Pathology	(Chairs: Ronald A. DeLellis and Enrico Solcia)
Advanced Techniques	(Chair: John D. Shelburne)
Basic Pathology	(Chairs: David N. Howell and Josep Lloreta Trull)
AIDS	(Chairs: Sara E. Miller and Jan M. Orenstein)

In addition, keynote lectures will be delivered by the following well renowned scientists: Feroze N. Ghadially, M.D., Ph.D., D.Sc. (London), Hon D.Sc. (Guelph), F.R.C. Path (England), F.R.C.P. (Canada); Gordon Klintworth, M.D.; and Prof. Baccio Baccetti.

A pleasant and friendly social program will be offered to all the meeting participants and their registered spouses, including the opening ceremony in the historical "Salone dei Cinquecento" in "Palazzo Vecchio" with the Inaugural Conference delivered by Dr. J. Rosai and the welcome reception in the Grand Hotel Baglioni, one afternoon tour in the Chianti area including dinner in a medieval castle, and the social dinner in a Florentine Villa.

Local Organizing Committee Chair:

Prof. Marco Santucci,
Dipartimento di Patologia Umana
ed Oncologia,
Università degli Studi di Firenze,
V.le G.B. Morgagni 85,
50134 Firenze, Italy
Telephone: +39-055-413756
Fax: +39-055-4379868
Email: Marco.Santucci@UNIFI.IT

Program Committee Chair:

J. Allan Tucker, M.D.,
Department of Pathology,
University of South Alabama,
2451 Fillingim Street, Mobile,
Alabama, 36617 U.S.A.
Telephone: 001-334-471-7799
Fax: 001-334-471-7884
Email: JTucker@USAMAIL.
USOUTHAL.EDU



European School of Pathology

Ovarian pathology Gastro-intestinal pathology

Prof. J. Prat, Barcelona

Prof. K. Geboes, Leuven

September
21-28

Turin, Italy

2000 courses

AIM

Post-graduate residential course for young European pathologists, members of the European Society of Pathology, based on workshops, slide seminars and few lectures to update and standardize participants' diagnostic ability

FEE

- * Registration is 150 Euro per course (Two courses: 250 Euro).
- * Full board accommodation (to be paid upon departure) is 65 Euro/day/person.
- * A limited number of scholarships is also available upon request (residence+registration costs)

Note

By July, a letter will confirm or reject the application. Do not send money now, please.

DATES

Ovarian pathology
Prof. J. Prat, Barcelona
September 21-23
Gastro-intestinal Pathology
Prof. K. Geboes, Leuven
September 25-28

PLACE

Institute for Scientific Interchange
Villa Gualino,
V.le S. Severo 65,
Torino, Italy.
Phone Office
+39 0116603090
Phone Residence
+39 0116603555

PAST COURSES

1991 Liver & GI path (non neopl)
Ovarian pathology
Breast pathology
1992 Pulmonary pathology
Endocrine pathology
1993 Hematopathology
1994 Hematopathology
Uterine pathology
Breast pathology
1995 Quantitative pathology
Neuropathology
Head & neck pathology
1996 Uro pathology
Dermatopathology (neopl)
1997 Tumors of liver & pancreas
Tumors of GI tract
1998 Soft tissue tumors
Breast pathology
1999 Lung pathology
Cytopathology

FUTURE COURSES

2001 Hematopathology
2002 Thyroid & parathyroid path.
Head & Neck pathology
2003 Pathology of the pancreas
Pathology of the liver

APPLY before May 30 to

European School of Pathology
c/o Dept Pathology, Univ Turin, Via Santena 7,
I-10126 Torino Italy
Phone +39 011 6706504 Fax +39 011 6635267
E-mail paotti@molinetto.unito.it



To EScOP

RE: Preliminary application

Surname:.....Name.....Sex.....

Date & place of birth.....Citizenship.....

Full address.....

Phone.....Fax.....E-mail.....

- ☐ member of ESP
- ☐ non member (I apply for 2000 ESP membership)
- ☐ application for 2 courses
- ☐ application for 1 course
- ☐ Sept 21 - 23
- ☐ Sept 25 - 28
- ☐ I shall attend the course only if a scholarship is available
- ☐ I enclose a brief curriculum vitae stating my experience in pathology

Date.....

Signature.....

European Society of Pathology

18th
**European
Congress
of Pathology**



2001

Berlin · Germany

September 9 – 14 · 2001

Local Organizer

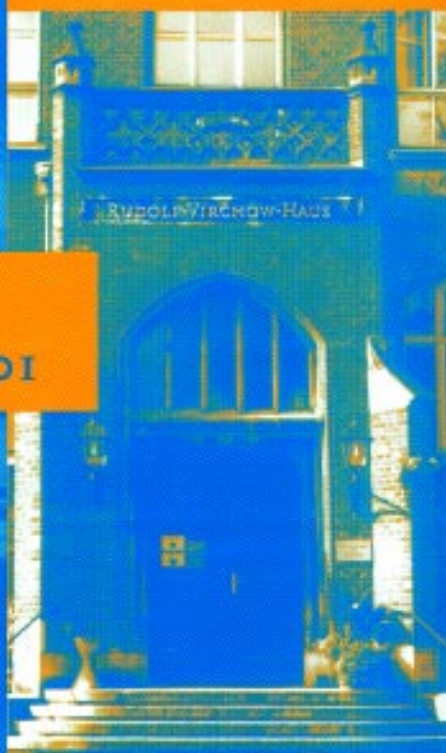
Prof. M. Dietel
Institute of Pathology
University Hospital Charité
Humboldt-University Berlin
Schumannstr. 20–21
D-10117 Berlin

Phone ++49 (0)30 - 28 02-31 58
Fax ++49 (0)30 - 28 02-34 07
e-Mail manfred.dietel@charite.de
Web www.charite.de

Congress Organisation

CTW - Congress Organisation
Thomas Wiese GmbH
Goßlerstr. 30
D-12161 Berlin

Phone ++49 (0)30 - 85 99 62-0
Fax ++49 (0)30 - 85 07 98 26
e-Mail thomas.wiese@ctw-congress.de
Web www.ctw-congress.de



Charité

Humboldt-University Berlin
Institute of Pathology





8th Meeting of the International Pituitary Pathology Club

October 5 - 9, 2001

**Conference Venue: European Cultural Center of
Delphi, Greece**

Dear colleagues:

I am pleased to invite you to the first International Pituitary Pathology Club Meeting of the new Millennium. In this multidisciplinary meeting pathologists, endocrinologists, neurosurgeons and basic science researchers from all over the world will get together and exchange ideas in a friendly atmosphere. Delphi will be the center of the world, as it was in the ancient era. It will be a great chance to come and enjoy a scientific congregation in the sanctuary of the god Apollo, the most famous oracle in the world.

I look forward to greeting you in Delphi.

George Kontogeorgos M.D.

If you would like to be kept up to date, please fill in the following form and send it to: George Kontogeorgos M.D., Department of Pathology, G.Gennimatas Athens General Hospital, 154 Messogion Avenue, 115 27, Athens, Greece, e-mail: gkonto@cc.uoa.gr

Last Name:	First Name:	Title:	
.....	
Institution:			
Street/No:	City:	ZIP:	State:
Country:	Tel:	Fax:	e-mail:

The European Society of Pathology

November 1999

Dear Colleague,

It will surely not have escaped your attention that *Virchows Archiv* is now the Official Journal of the European Society of Pathology.

But did you realise what benefits membership in the society offer you?

- A subscription to the journal *Virchows Archiv* at no extra charge – this is automatically sent to every member every month.
- Access to the journal online within LINK (take a look at <http://link.springer.de>). If you are already a member of ESP but have not yet registered for your free electronic access, you will find the necessary form to complete online here too.
- A discount of 20% on most titles published by Springer. To take advantage of this, simply send your order directly to the publisher, with details of your membership.
- Attendance at the Society's conferences at a reduced fee.

If you have not yet joined the European Society of Pathology, why not do so now? Simply complete and return the form enclosed. If you are already a member, please wait for our renewal letter for 2000.

We look forward to welcoming you as a member in 2000.

Yours sincerely

M. Sobrinho-Simões

President
European Society of Pathology

U. van Haelst

Treasurer
European Society of Pathology

G. Klöppel

Managing Editor
Virchows Archiv



EUROPEAN SOCIETY OF PATHOLOGY
(E.S.P.)



Application for Membership

Please, use TYPEWRITER ONLY for filling in the form!

Surname:

First name(s):

☐

Male

☐

Female

Place and date of birth:

Title/present position:

☐

Prof.

☐

Dr.

☐

Resident other:

PRIVATE ADDRESS:

Street:

City:

Postcode/zip:

State/Country:

INSTITUTE/OFFICE ADDRESS: *(This address will be used for subsequent correspondence)*

Name:

Street:

City:

Postcode/zip:

State/Country:

Tel. (+ ext):

Telefax:

FIELDS OF INTEREST:

Date of application:

Signature:

Please
mail or fax
this
application form
to:

Prof. Dr. U. van Haelst
Treasurer ESP
Institute of Pathology
Medical Faculty
Geert Grooteplein Zuid, 24
NL - 6525 GA Nijmegen
The Netherlands
Fax: +31-24-354 0520

Your acceptance as a
member of the E.S.P. will
be confirmed in due time
and information will be
given about the payment
of the membership fee.



Need new tools?

Meet current and future needs with latest developments made by Leica – specifically designed for profit-oriented laboratories. Leica EG1140 consisting of two modules allows comfortable tissue embedding. The disc microtome Leica DSC1 makes paraffin sectioning safer, faster and more efficient with a novel fully automated sectioning process. Leica ST4040 is the first flexible linear staining system with double the throughput capacity and the ability to batch load and unload.

Leica Microsystems Nußloch GmbH
Heidelberger Strasse 17-19
D-69226 Nußloch

Phone (06224) 143-0
Fax: (06224) 143-200
<http://www.leica.microsystems.com>

Leica